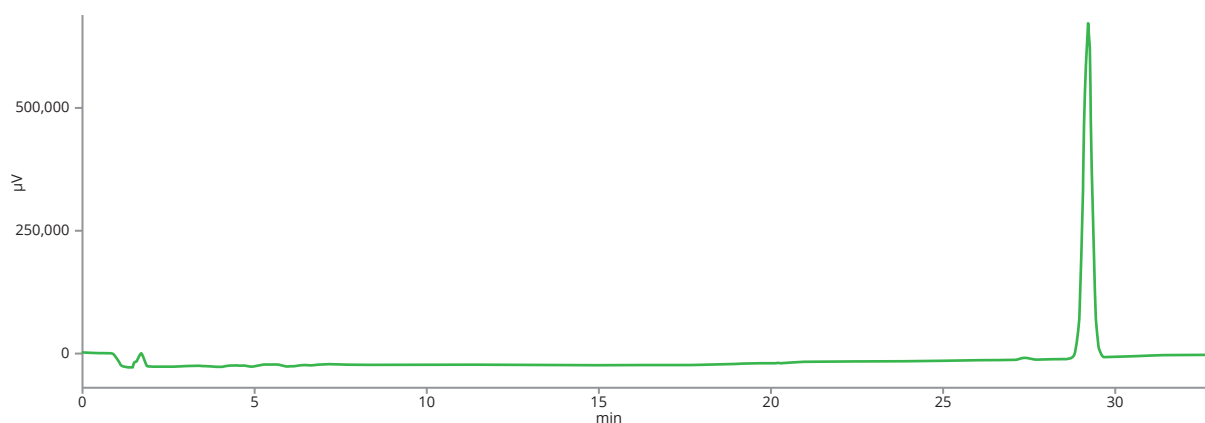




Synthetic prostaglandin

Synthetic analogue of prostaglandin F2 α (PGF 2 α) is used in veterinary medicine as luteolytic agent for the induction of estrus and the treatment of reproductive disorders in cattle, swine, and horses. This application shows the determination of synthetic prostaglandin according to proprietary method. ASTRA® C18-HE column provide perfect peak symmetry in a long sequence of analysis.

Substance	Synthetic prostaglandin
------------------	-------------------------



Test solution on ASTRA® column

Column	ASTRA® C18-HE, 5.0 μ m
Dimensions	150 mm \times 4.6 mm
Part number	AST-5732-LK46
Mobile phase	Proprietary
Flow rate	0.1 ml/min
Temperature	40 °C
Detection	UV at 220 nm
Injection volume	20 μ l
Analytes	1. Synthetic prostaglandin